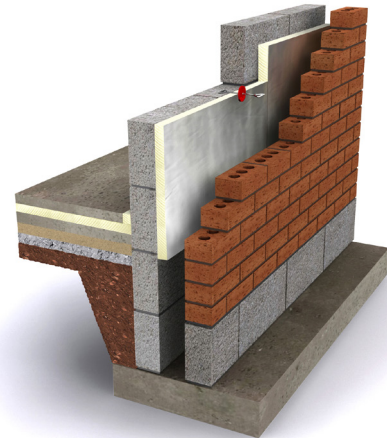


Celotex CW4000 is an insulation board specifically for partial fill cavity wall applications.

With Celotex CW4000 you are specifying an insulation board that:

- Comes in conveniently sized boards for installation between cavity wall ties
- Is certified under BBA certificate number [16/5343](#)
- Includes low emissivity foil facings giving improved thermal insulation performance within cavity air spaces
- Can be used to provide energy performance of new and existing buildings



Celotex CW4000 in a partial fill cavity wall application

Applications

Celotex CW4000 is specifically for use in partial-fill cavity wall applications.

Specification clause

The insulation shall be Celotex CW4000 ____mm thick comprising a polyisocyanurate rigid foam insulation core with a thermal conductivity of 0.022 W/mK with low emissivity aluminium foil facings on both sides. Celotex CW4000 is CFC/HCFC free with zero ODP, low GWP and CE marking. Celotex CW4000 is manufactured in accordance with quality management system ISO 9001 and environmental management system ISO 14001. All products must be installed in accordance with guidance issued by Celotex.

Where building regulation approval is required, you should take advice from your local building control authority and the building designer.



We have an experienced team of energy assessors who can carry out SAP calculations, water calculations, airtightness testing and much more. [Contact us.](#)

Technical data

| Thickness (mm) | R-value (m ² K/W) | Maximum board weight (kg/m ²) |
|----------------|------------------------------|---|
| 40 | 1.80 | 1.41 |
| 50 | 2.25 | 1.92 |
| 60 | 2.70 | 2.26 |
| 75 | 3.40 | 2.78 |
| 85 | 3.85 | 3.13 |
| 100 | 4.50 | 3.65 |

Physical properties

| | Method | CW4000 |
|--------------------------------|----------------------------|----------------------------|
| Compressive strength | BS EN 826:2013 | CS(10\Y)120 |
| Dimensional stability | BS EN 1604:2013 | DS (70, 90)3 - DS (-20,-)1 |
| Thermal conductivity | BS EN 12667:2001 | 0.022 W/mK |
| Surface spread of flame | BS 476-7:1997 | Class 1 |
| Reaction to fire | BS EN 13501-1:2007+A1:2009 | E |

Typical U-values

U-values will vary depending on application. To calculate a specific U-value, please visit our online calculator at [celotex.co.uk](#)

Installation guidelines

For Celotex CW4000 installation details please refer to our online 'applications' pages.

Further information

If you wish to contact Celotex, please do so through the '[contact us](#)' page on our website.

For information regarding storage, installation and handling of Celotex products, or for health & safety information, please refer to our online 'literature' pages.

Celotex has a policy of continuous product development and reserves the right to alter product designs or specifications without prior notice.

Saint-Gobain Construction Products UK Limited trading as Celotex. Registered Office: Saint-Gobain House, Binley Business Park, Coventry CV3 2TT. Registered in England and Wales No 734396